

## Test report

Report No. GZES201103204601

Date: 2020-12-15

The following sample was submitted and identified on behalf of the client as:

Applicant: EVOLVE ENERGY GROUP CO., LIMITED  
RM 702,7/F FU FAI COMM CTR 27 HILLIER ST SHEUNG WAN, HK

Testing location/address: EVOLVE ENERGY GROUP CO., LIMITED  
RM 702,7/F FU FAI COMM CTR 27 HILLIER ST SHEUNG WAN, HK

The standards/method: Refer to IEC 60529: 2013-08 (Ed.2.2) clause 13 and clause 14

Test item description: IP66

Trade Mark:



Model/Type for test: E- 100KTL

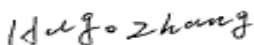
Variant Models E- 75KTL, E- 80KTL, E- 110KTL  
E- 100 KTL-HV, E- 125 KTL-HV, E- 136 KTL-HV

Ratings: See page 2 to page 3

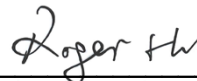
Sample receipt date: 2020-12-15

Test result : Pass

Remark: Throughout this report a point is used as the decimal separator.  
When determining for test conclusion, measurement uncertainty of tests has been considered.



Hugo Zhang  
Project Engineer



Roger Hu  
Technical Reviewer

TEST RESULTS:

Test items	Test condition	Test result
IP6X	The enclosure under test is supported inside the test chamber and the pressure inside the enclosure is maintained below the surrounding atmospheric pressure by a vacuum pump, The suction connection shall be made to a hole specially provided for the test.	No deposit of dust is observable inside the enclosure.
IPX6	Internal diameter of the nozzle: 12.5 mm Delivery rate: 100L/min Core of the substantial stream: circle of approximately 12.5 mm diameter at 2.5 m distance from nozzle Test duration: 3 min Distance from nozzle to enclosure surface: between 2.5 m and 3 m.	No water inside the enclosure

Remark: This report is a first issuance for a co-license based on report number GZES201203336901

Rating:

<p><b>EWVO</b> Solar Grid-tied Inverter</p> <p>Model No: E-75KTL</p> <p>Max. DC Input Voltage 1100V</p> <p>Operating MPPT Voltage Range 180~1000V</p> <p>Max. Input Current 8*26A</p> <p>Max. PV Isc 8*40A</p> <p>Rated Grid Voltage 3/N/PE, 380/400Vac</p> <p>Max. Output Current 113A</p> <p>Rated Grid Frequency 50/60Hz</p> <p>Rated Output Power 75KW</p> <p>Max. Output Power 75KVA</p> <p>Power Factor 1 (adjustable +/-0.8)</p> <p>Ingress Protection IP66</p> <p>Operating Temperature Range -30°C~+60°C</p> <p>Protective Class Class I</p> <p>Overvoltage Category AC III, DC II</p> <p>Made in China</p> <p>Manufacturer: EVOLVE ENERGY GROUP CO., LIMITED Address: RM 702, 7/F FU FAI COMM CTR 27 HILLIER ST SHEUNG WAN, HK Global Head Quarters 371 Sidco Industrial Estate Chennai 600098 India</p> <p>VDE0126-1-1, VDE-AR-N4105, G99, IEC61727 IEC62116, AS4777</p>	<p><b>EWVO</b> Solar Grid-tied Inverter</p> <p>Model No: E-80KTL</p> <p>Max. DC Input Voltage 1100V</p> <p>Operating MPPT Voltage Range 180~1000V</p> <p>Max. Input Current 8*26A</p> <p>Max. PV Isc 8*40A</p> <p>Rated Grid Voltage 3/N/PE, 380/400Vac</p> <p>Max. Output Current 128A</p> <p>Rated Grid Frequency 50/60Hz</p> <p>Rated Output Power 80KW</p> <p>Max. Output Power 88KVA</p> <p>Power Factor 1 (adjustable +/-0.8)</p> <p>Ingress Protection IP66</p> <p>Operating Temperature Range -30°C~+60°C</p> <p>Protective Class Class I</p> <p>Overvoltage Category AC III, DC II</p> <p>Factory - Shenzhen China</p> <p>Manufacturer: EVOLVE ENERGY GROUP CO., LIMITED Address: RM 702, 7/F FU FAI COMM CTR 27 HILLIER ST SHEUNG WAN, HK Global Head Quarters 371 Sidco Industrial Estate Chennai 600098 India</p> <p>VDE0126-1-1, VDE-AR-N4105, G99, IEC61727 IEC62116, AS4777</p>
---	--

This document is issued by the Company subject to its General Conditions of Service, available on request or accessible at <http://www.sgs.com/en/Terms-and-Conditions.aspx> and, for electronic format documents, subject to Terms and Conditions for Electronic Documents at <http://www.sgs.com/en/Terms-and-Conditions/Terms-e-Document.aspx>. Attention is drawn to the limitation of liability, indemnification and jurisdiction issues defined therein. Any holder of this document is advised that information contained hereon reflects the Company's findings at the time of its intervention only and within the limits of Client's instructions, if any. The Company's sole responsibility is to its Client and this document does not exonerate parties to a transaction from exercising all their rights and obligations under the transaction documents. This document cannot be reproduced except in full, without prior written approval of the Company. Any unauthorized alteration, forgery or falsification of the content or appearance of this document is unlawful and offenders may be prosecuted to the fullest extent of the law. Unless otherwise stated the results shown in this test report refer only to the sample(s) tested and such sample(s) are retained for 30 days only.

**EVVO** Solar Grid-tied Inverter

Model No: E-100KTL

Max.DC Input Voltage	1100V
Operating MPPT Voltage Range	180~1000V
Max. Input Current	10*26A
Max. PV Isc	10*40A
Rated Grid Voltage	3/N/PE, 380/400Vac
Max. Output Current	160A
Rated Grid Frequency	50/60Hz
Rated Output Power	100KW
Max. Output Power	110KVA
Power Factor	1(adjustable+/-0.8)
Ingress Protection	IP66
Operating Temperature Range	-30°C~+60°C
Protective Class	Class I
Overvoltage Category	AC III, DC II
Factory - Shenzhen China	

Manufacturer : EVOLVE ENERGY GROUP CO., LIMITED  
Address :RM 702, 7/F FU FAI COMM CTR 27 HILLIER ST  
SHEUNG WAN, HK  
Global Head Quarters 371 Sidco Industrial Estate  
Chennai 600098 India

VDE0126-1-1,VDE-AR-N4105,G99,IEC61727  
IEC62116,AS4777

**EVVO** Solar Grid-tied Inverter

Model No: E-110KTL

Max.DC Input Voltage	1100V
Operating MPPT Voltage Range	180~1000V
Max. Input Current	10*26A
Max. PV Isc	10*40A
Rated Grid Voltage	3/N/PE, 380/400Vac
Max. Output Current	175A
Rated Grid Frequency	50/60Hz
Rated Output Power	110KW
Max. Output Power	121KVA
Power Factor	1(adjustable+/-0.8)
Ingress Protection	IP66
Operating Temperature Range	-30°C~+60°C
Protective Class	Class I
Overvoltage Category	AC III, DC II
Made in China	

Manufacturer : EVOLVE ENERGY GROUP CO., LIMITED  
Address :RM 702, 7/F FU FAI COMM CTR 27 HILLIER ST  
SHEUNG WAN, HK  
Global Head Quarters 371 Sidco Industrial Estate  
Chennai 600098 India

VDE0126-1-1,VDE-AR-N4105,G99,IEC61727  
IEC62116,AS4777

**EVVO** Solar Grid-tied Inverter

Model No: E-100KTL-HV

Max.DC Input Voltage	1100V
Operating MPPT Voltage Range	180~1000V
Max. Input Current	10*26A
Max. PV Isc	10*40A
Rated Grid Voltage	3/PE,500Vac
Max. Output Current	128A
Rated Grid Frequency	50/60Hz
Rated Output Power	100KW
Max. Output Power	110KVA
Power Factor	1(adjustable+/-0.8)
Ingress Protection	IP66
Operating Temperature Range	-30°C~+60°C
Protective Class	Class I
Overvoltage Category	AC III, DC II
Made in China	

Manufacturer : EVOLVE ENERGY GROUP CO., LIMITED  
Address :RM 702, 7/F FU FAI COMM CTR 27 HILLIER ST  
SHEUNG WAN, HK  
Global Head Quarters 371 Sidco Industrial Estate  
Chennai 600098 India

VDE0126-1-1,VDE-AR-N4105,G99,IEC61727  
IEC62116,AS4777

**EVVO** Solar Grid-tied Inverter

Model No: E-125KTL-HV

Max.DC Input Voltage	1100V
Operating MPPT Voltage Range	180~1000V
Max. Input Current	10*26A
Max. PV Isc	10*40A
Rated Grid Voltage	3/PE,500Vac
Max. Output Current	160A
Rated Grid Frequency	50/60Hz
Rated Output Power	125KW
Max. Output Power	137KVA
Power Factor	1(adjustable+/-0.8)
Ingress Protection	IP66
Operating Temperature Range	-30°C~+60°C
Protective Class	Class I
Overvoltage Category	AC III, DC II
Made in China	

Manufacturer : EVOLVE ENERGY GROUP CO., LIMITED  
Address :RM 702, 7/F FU FAI COMM CTR 27 HILLIER ST  
SHEUNG WAN, HK  
Global Head Quarters 371 Sidco Industrial Estate  
Chennai 600098 India

VDE0126-1-1,VDE-AR-N4105,G99,IEC61727  
IEC62116,AS4777

**EVVO** Solar Grid-tied Inverter

Model No: E-136KTL-HV

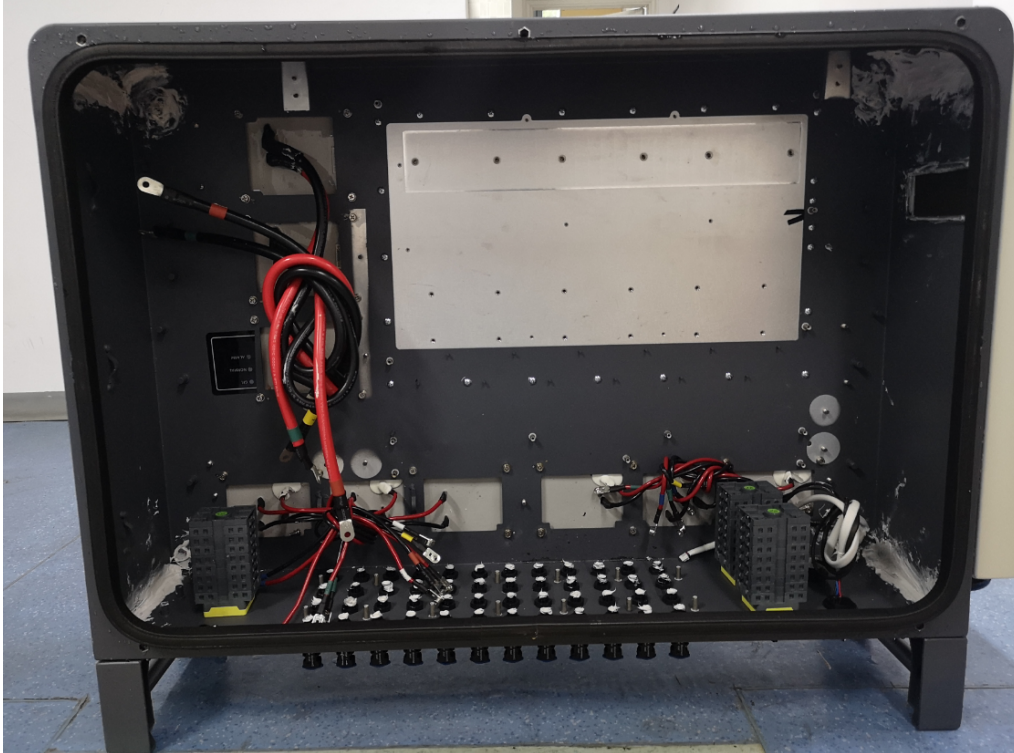
Max.DC Input Voltage	1100V
Operating MPPT Voltage Range	180~1000V
Max. Input Current	10*26A
Max. PV Isc	10*40A
Rated Grid Voltage	3/PE,540Vac
Max. Output Current	160A
Rated Grid Frequency	50/60Hz
Rated Output Power	136KW
Max. Output Power	150KVA
Power Factor	1(adjustable+/-0.8)
Ingress Protection	IP66
Operating Temperature Range	-30°C~+60°C
Protective Class	Class I
Overvoltage Category	AC III, DC II
Made in China	

Manufacturer : EVOLVE ENERGY GROUP CO., LIMITED  
Address :RM 702, 7/F FU FAI COMM CTR 27 HILLIER ST  
SHEUNG WAN, HK  
Global Head Quarters 371 Sidco Industrial Estate  
Chennai 600098 India

VDE0126-1-1,VDE-AR-N4105,G99,IEC61727  
IEC62116,AS4777

**Appendix Photos:**

After IP66 test, no deposit of dust and no water are observable inside the enclosure



\*\*\*\*\*End of report\*\*\*\*\*